

# Install the USB driver

## 1. Install the driver software.

1.1 Open the CD, you will see as chart 1.

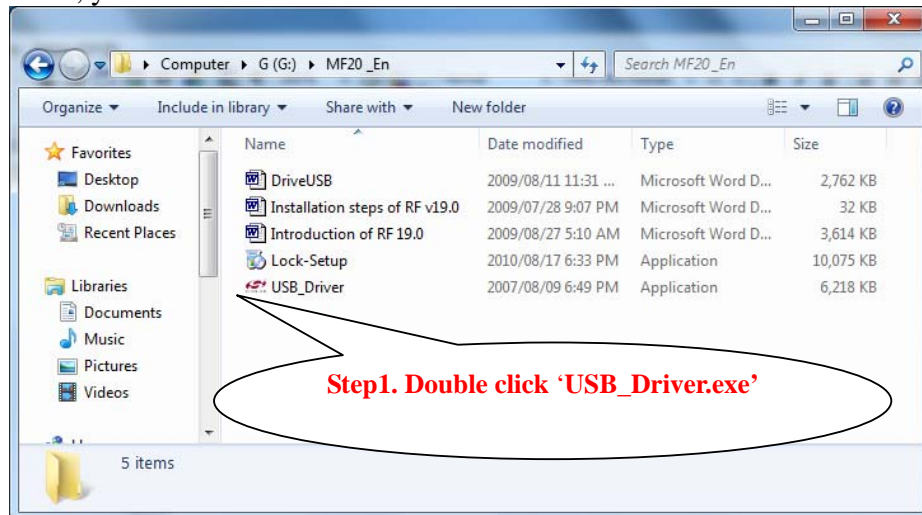


Chart 1

1.2 Double click 'USB\_Driver.exe', display chart 2;

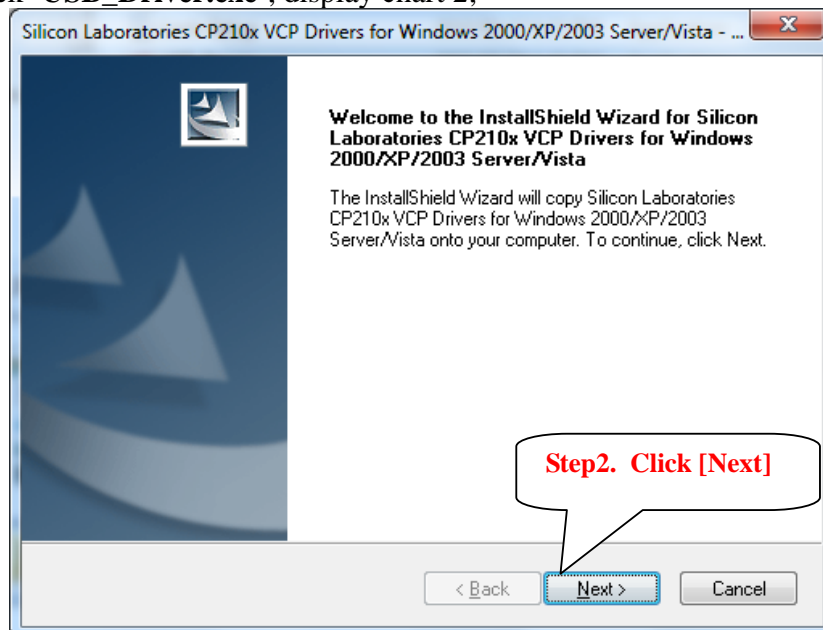


Chart 2

1.3 Click [Next] button, display chart 3;

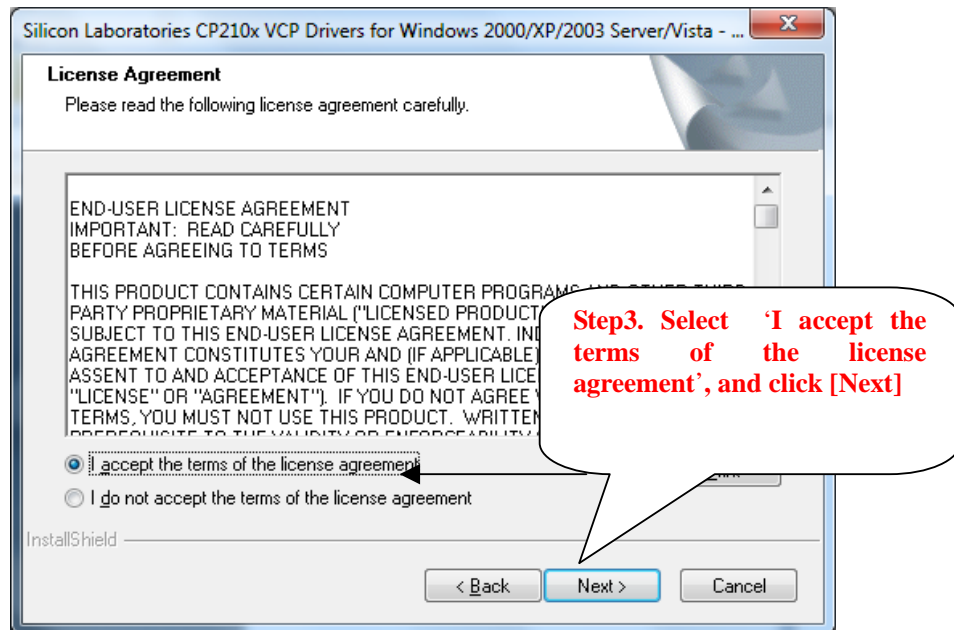


Chart 3

1.4 Select **'I accept the terms of the license agreement'**, then Click **[Next]** button, display chart 4;

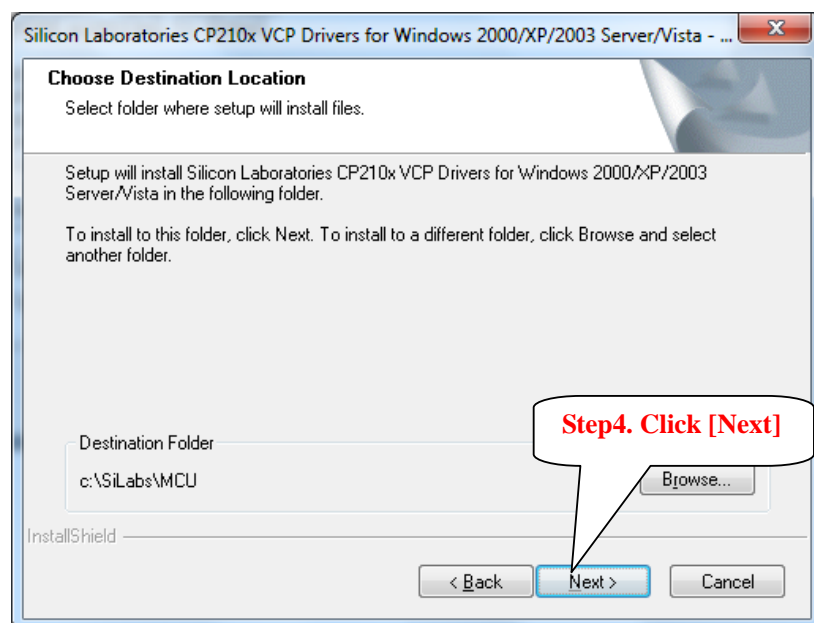


Chart 4

1.5 Click **[Next]** button, display chart 5;

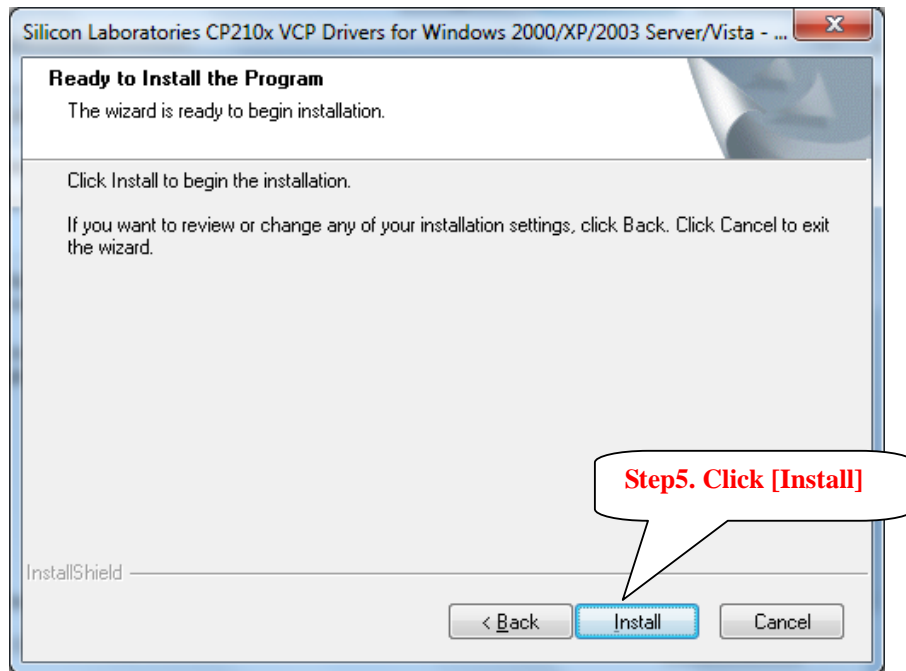
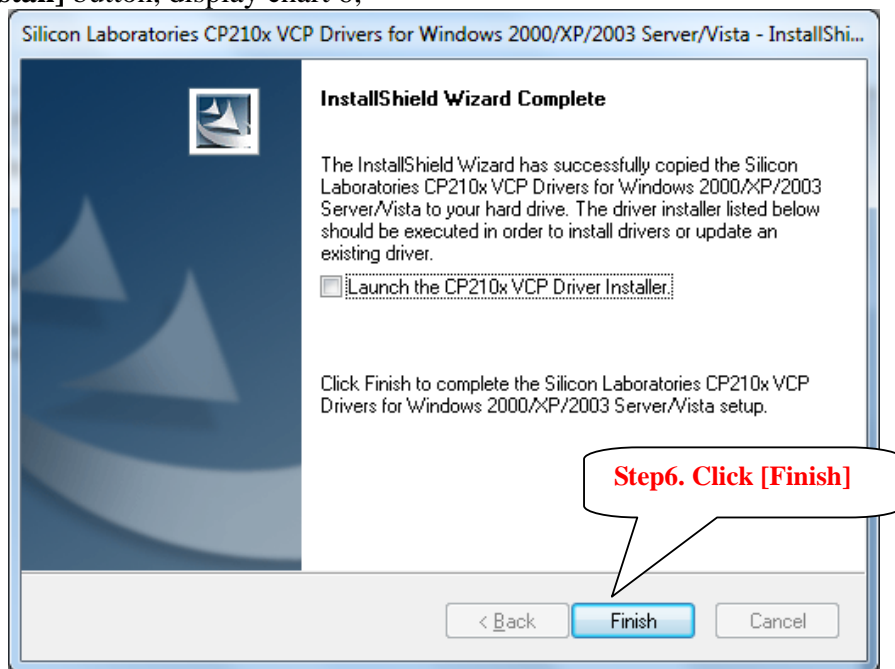


Chart 5

1.6 Click **[Install]** button, display chart 6;



1.7 Click **[Finish]** button.

## 2. Update the device software

2.1 As chart 2.1, Right click computer icon on the desktop, and select 'Properties', display chart 2.2.

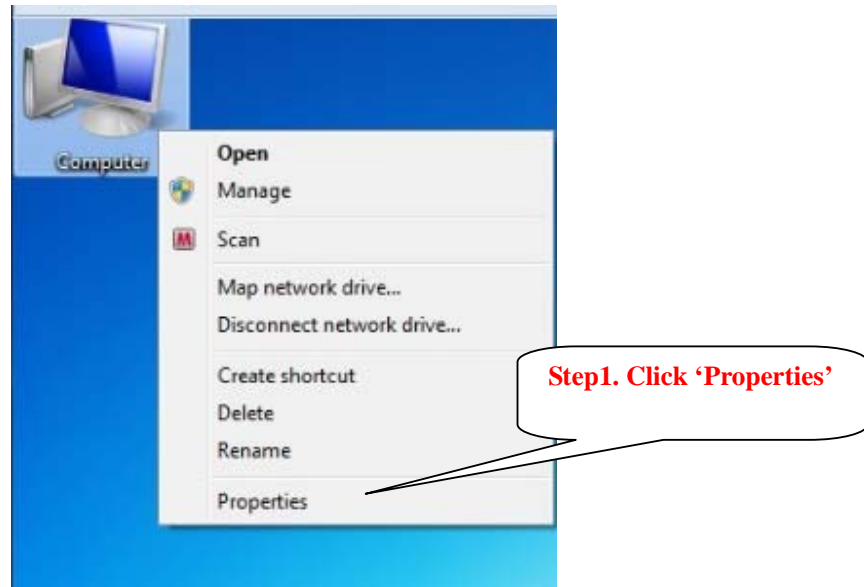


Chart 2.1

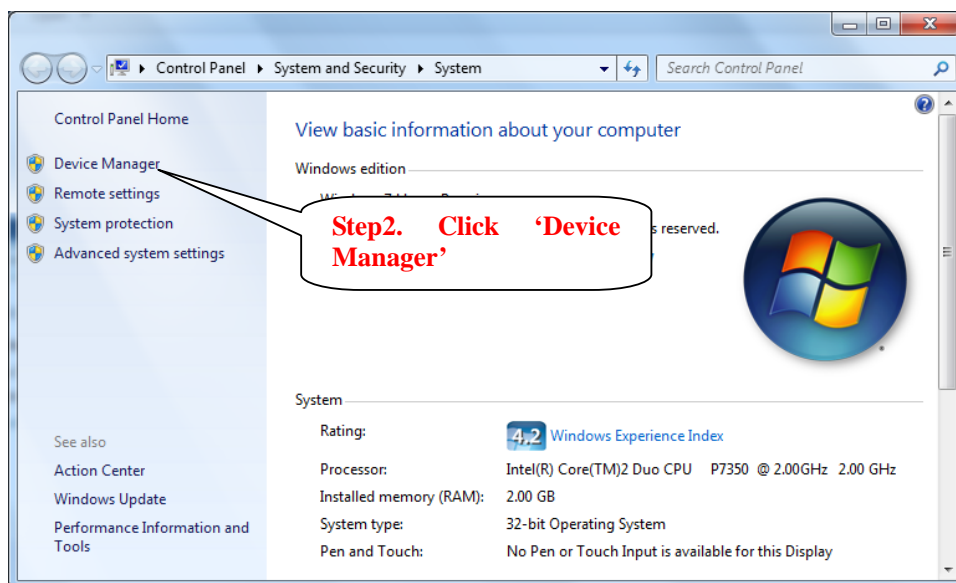


Chart 2.2

2.2 Click 'Device Manager', display chart 2.3.

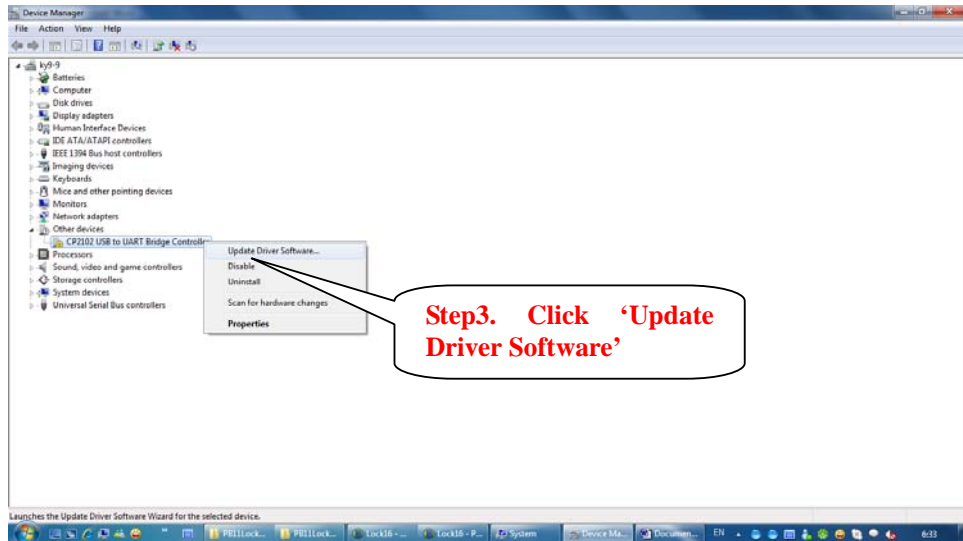


Chart 2.3

2.3 Right Click 'CP2101USB to UART Bridge Controllers', and select 'Update Driver Software', display chart 2.4.

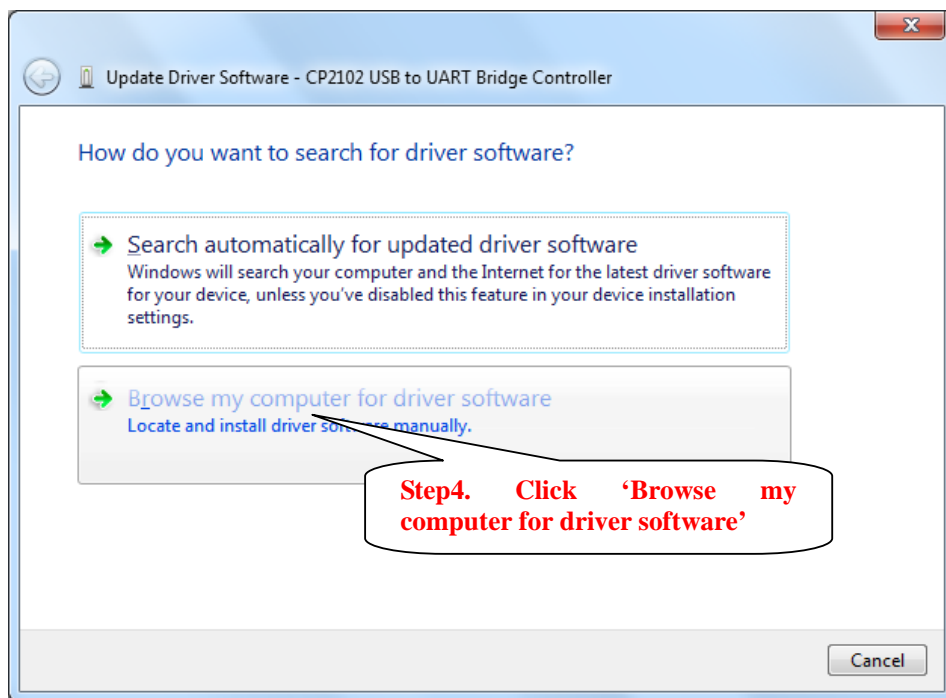


Chart 2.4

2.4 Click 'Browse my computer for driver software', display chart 2.5.

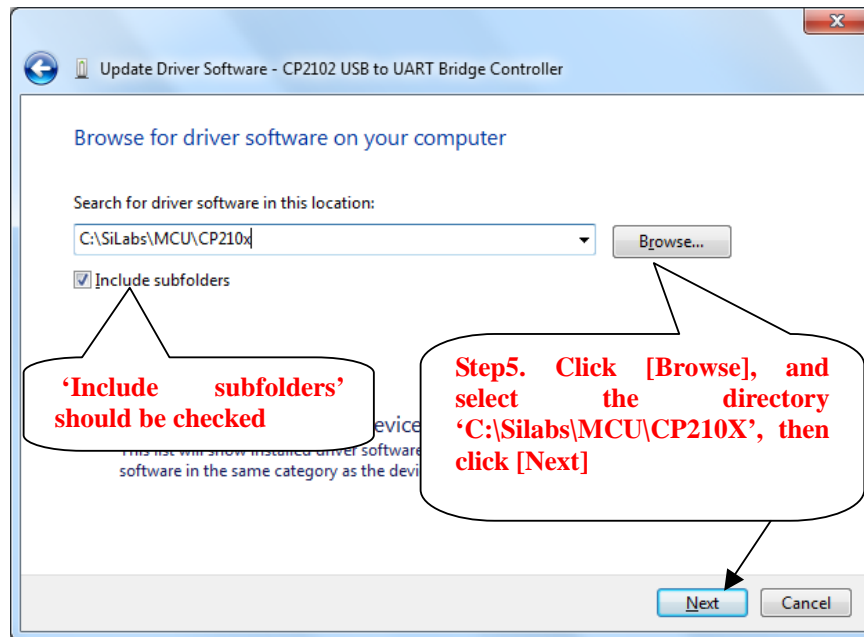


Chart 2.5

- 2.5 Make 'Include subfolders' be checked, Click [Browse], and select the directory 'C:\Silabs\MCU\CP210X', then click [Next], and wait for about 3 minutes for the file copy, display chart 2.6.

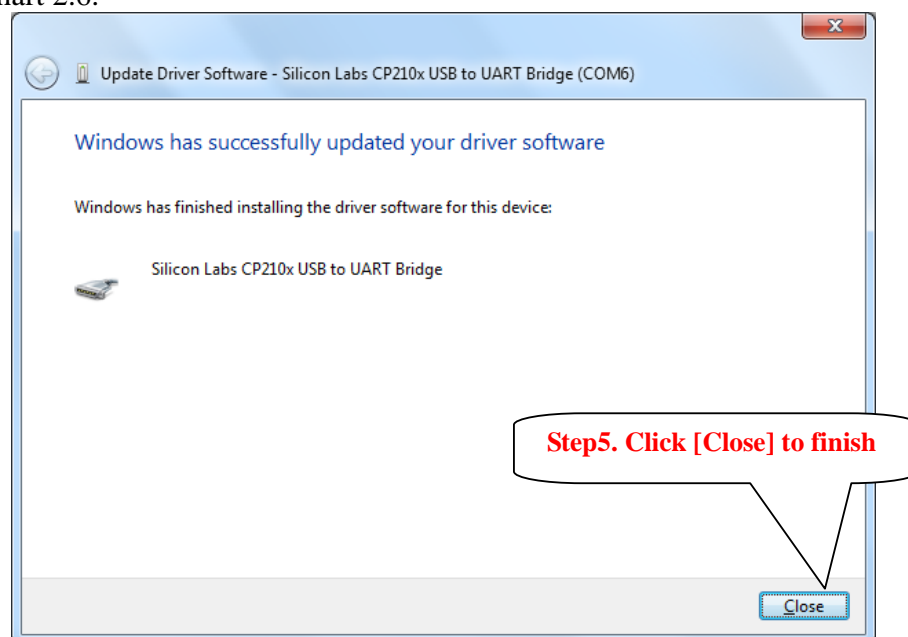


Chart 2.6

- 2.6 Click [Close] to finish the driver software update.
- 2.7 Try to run the lock system to check whether can link the encoder. If the encoder can be linked, there will be COM number shown when login the lock system. If the encoder can be linked, then finish. Otherwise try to change the com port number as below.

### 3. Change the com port number

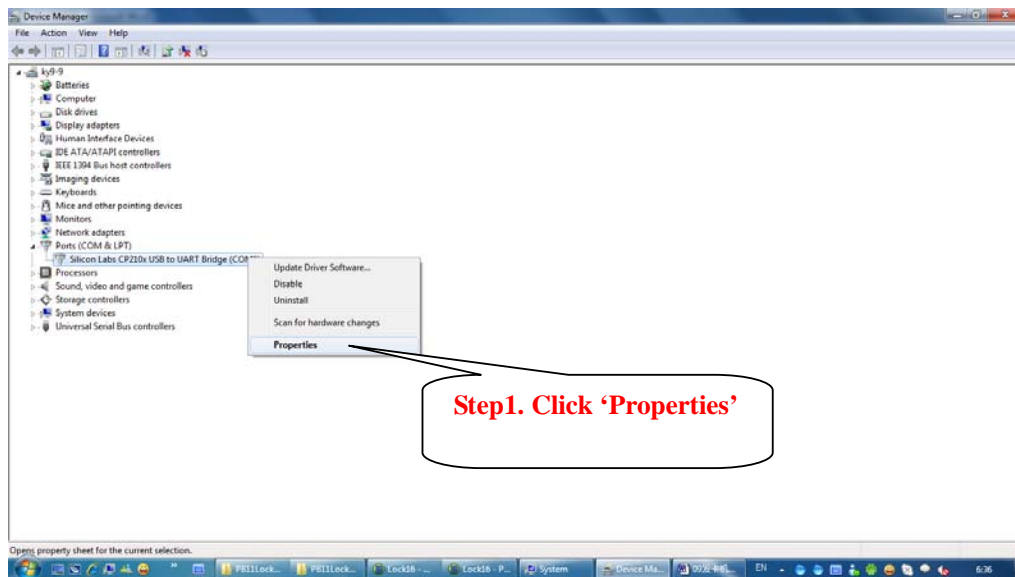


Chart 3.1

3.1 Right Click 'CP2101USB to UART Bridge Controllers', and select 'Properties', display chart 3.2.

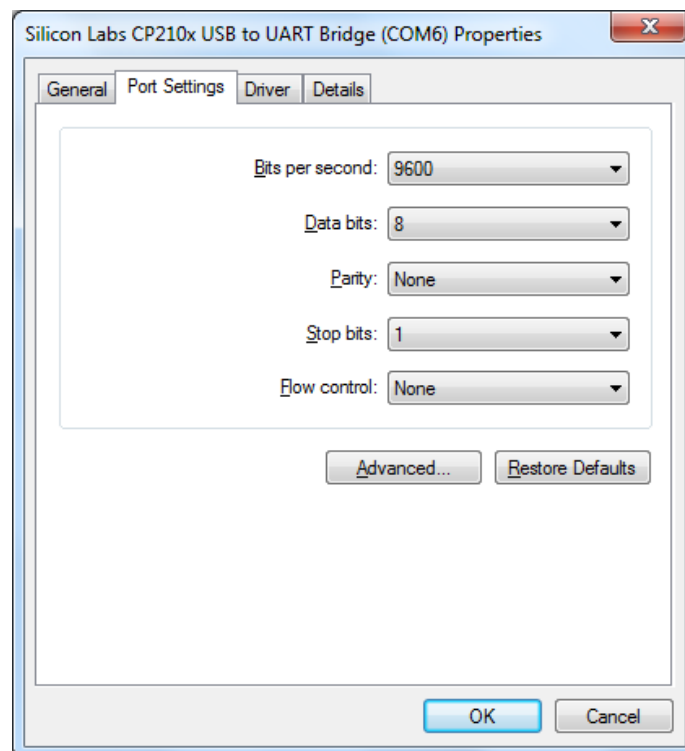


Chart 3.2

3.2 Choose page [Port Settings], then Click [Advanced], display chart 3.3.

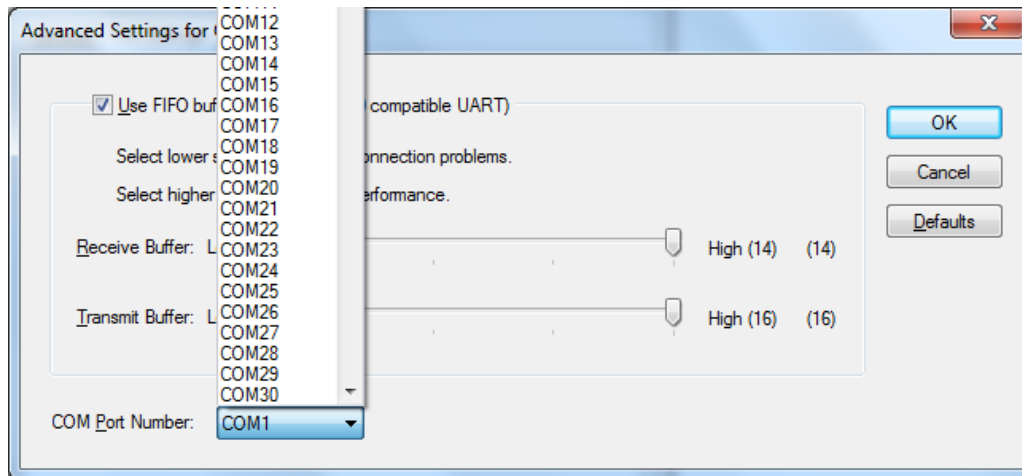


Chart 3.3

3.3 Select the com number less then 20, then Click [OK]

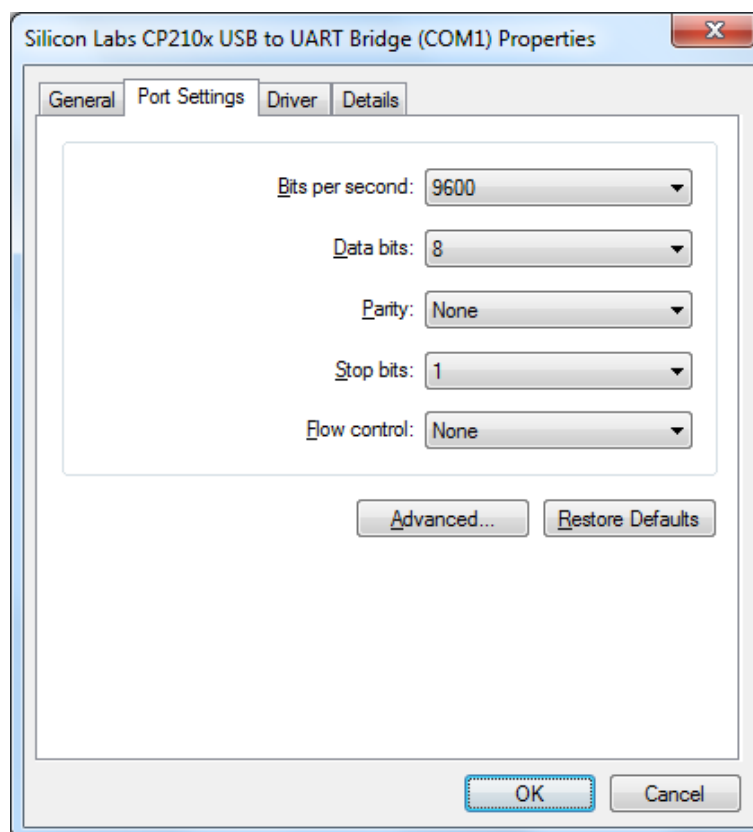


Chart 3.4

3.4 Click [OK] to close.

3.5 Try to run the lock system to check whether can link the encoder. If the encoder can be linked, there will be COM number shown when login the lock system. If the encoder can be linked, then finish.